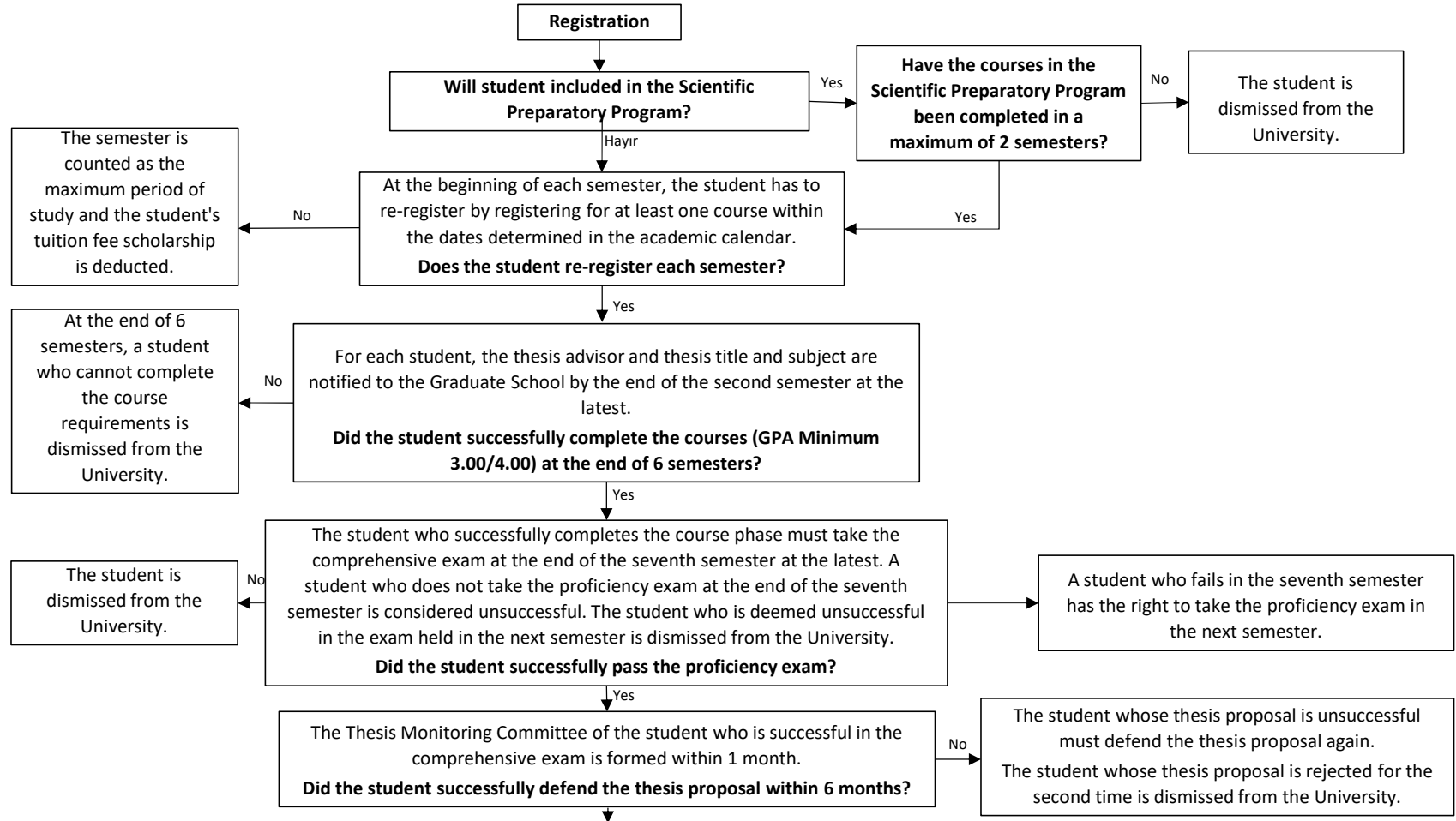


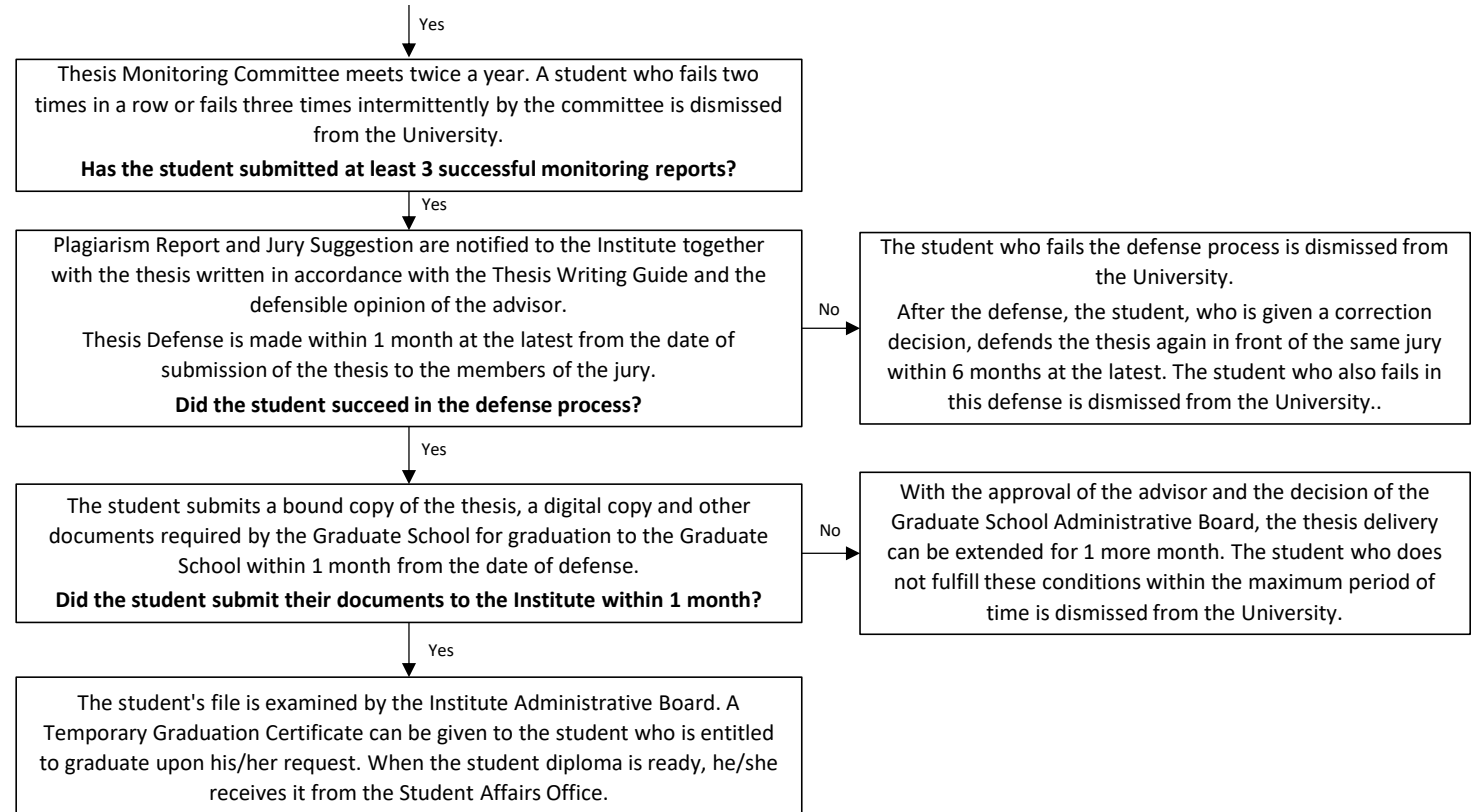
**School of Graduate Studies
Integrated PhD Processes**



School of
Graduate Studies

Course Phase
At least 14 Courses + Seminar + Research Methods
Thesis Phase
Minimum 300 ECTS (Course Phase + Ph.D. Comprehensive + Thesis Proposal Defense + 3 Successful Thesis Monitoring + Publication Requirement)
Duration
Maximum 14 semesters excluding the Scientific Preparatory Program





[BOLOGNA | ECTS Information Package and Course Catalogue \(khas.edu.tr\)](https://khas.edu.tr/BOLOGNA)

[Regulations and Directives - Kadir Has Üniversitesi \(khas.edu.tr\)](https://khas.edu.tr/Regulations)

[Akademik Takvim \(khas.edu.tr\)](https://khas.edu.tr/Akademik)

[Thesis and Project Writing Guidelines \(khas.edu.tr\)](https://khas.edu.tr/Thesis)