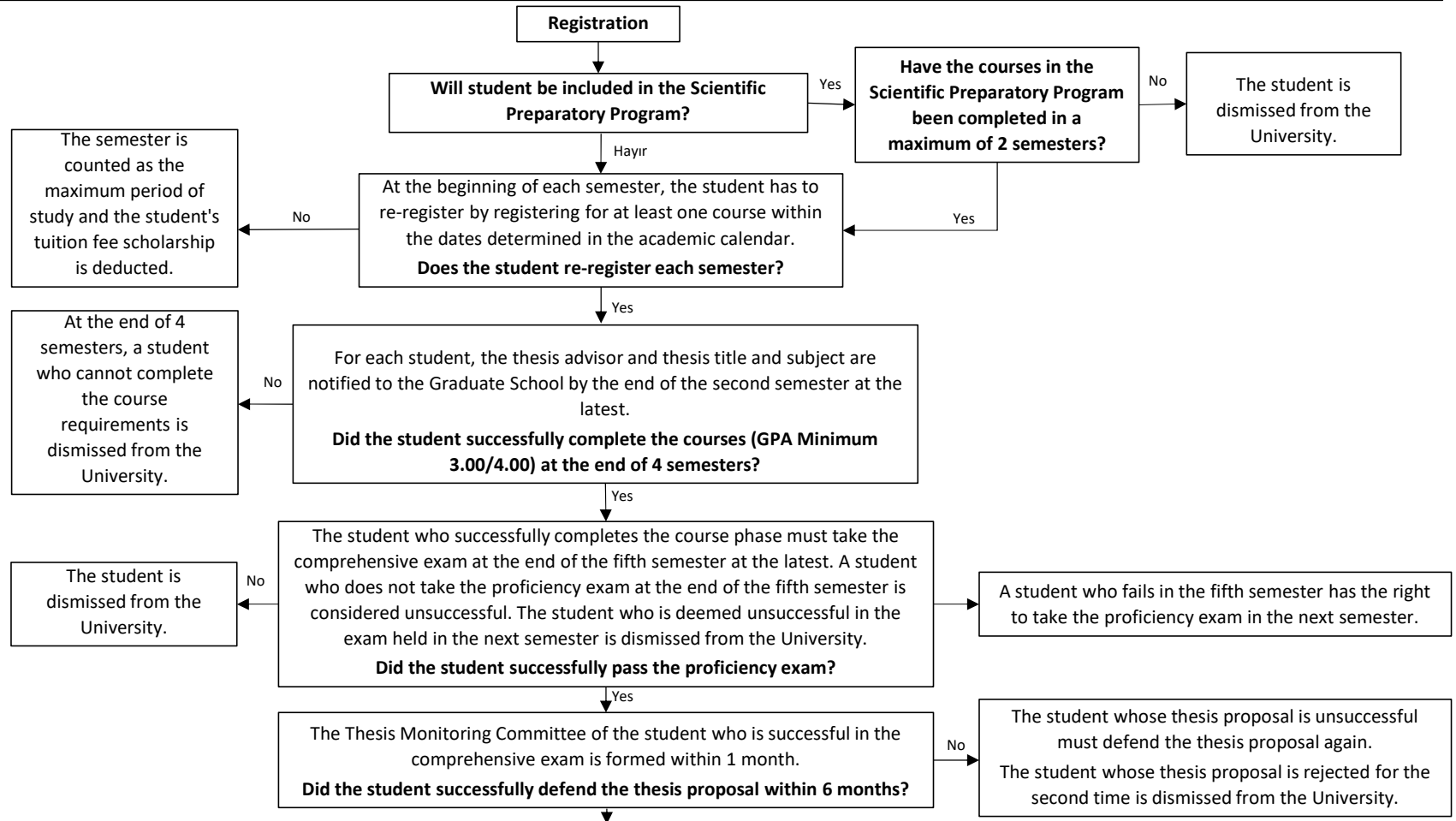


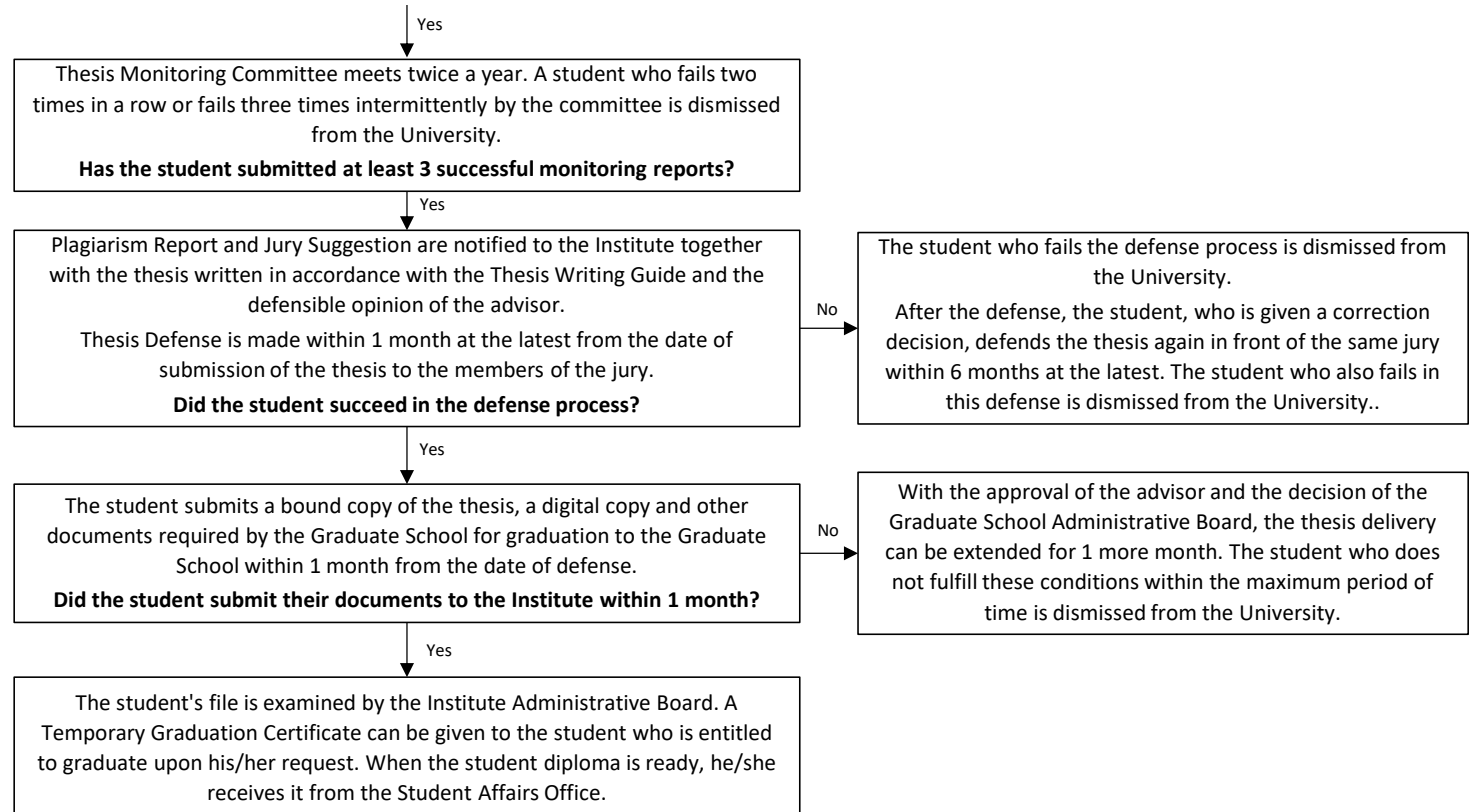
**School of Graduate Studies  
PhD Processes**



School of  
Graduate Studies

**Course Phase**  
**At least 7 Courses + Seminar + Research Methods**  
**Thesis Phase**  
**Minimum 240 ECTS (Course Phase + Ph.D. Comprehensive + Thesis Proposal Defense + 3 Successful Thesis Monitoring + Publication Requirement)**  
**Duration**  
**Maximum 12 semesters excluding the Scientific Preparatory Program**





[BOLOGNA | ECTS Information Package and Course Catalogue \(khas.edu.tr\)](https://khas.edu.tr)

[Regulations and Directives - Kadir Has Üniversitesi \(khas.edu.tr\)](https://khas.edu.tr)

[Akademik Takvim \(khas.edu.tr\)](https://khas.edu.tr)

[Thesis and Project Writing Guidelines \(khas.edu.tr\)](https://khas.edu.tr)